

Step 1: This link will take you to a zip folder containing three files.

<https://www.dropbox.com/s/b4i6kwxxnl0czq7/NewGene%20Database%20Files%209192018.zip?dl=0>

The files are:

- NewGeneInputDatasets.newgene.in.db
- NewGeneInputDatasets.newgene.in.model.xml
- NewGeneInputDatasets.newgene.in.xml

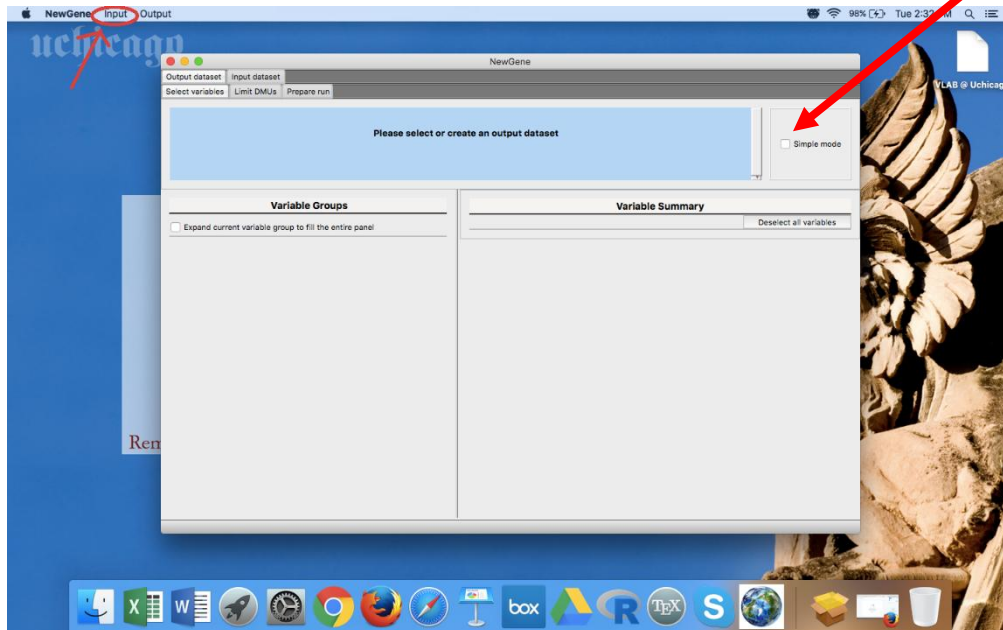
Step 2: go to your Documents folder and create a folder therein called 'NewGene' (**note: we recommend that this folder not be in iCloud as syncing issues can prevent the software from running properly**).

Step 3: Unzip and then copy the files into this folder.

Step 4: Now run NewGene. Uncheck the ``Simple Mode'' Box.

Step 5: From the menu bar, choose ``Input''

- **NOTE 1: this is different from the ``Input Dataset'' Tab).**
- **NOTE 2: to see the ``Input'' menu, you must click off the ``Simple Mode'' box.**



Step 6: From the Input menu, select "Open Input Dataset".

Step 7: A standard "File Open" dialog will appear. Use this to locate the "NewGeneInputDatasets.newgene.in.xml" file and select it (from the location noted above).

Step 8: Go to the Output menu (next to the Input menu at the top of the screen).

Step 9: Click on ``New Output Dataset''

Step 10: Create an arbitrarily named output dataset.

After all that, the variables should now appear!